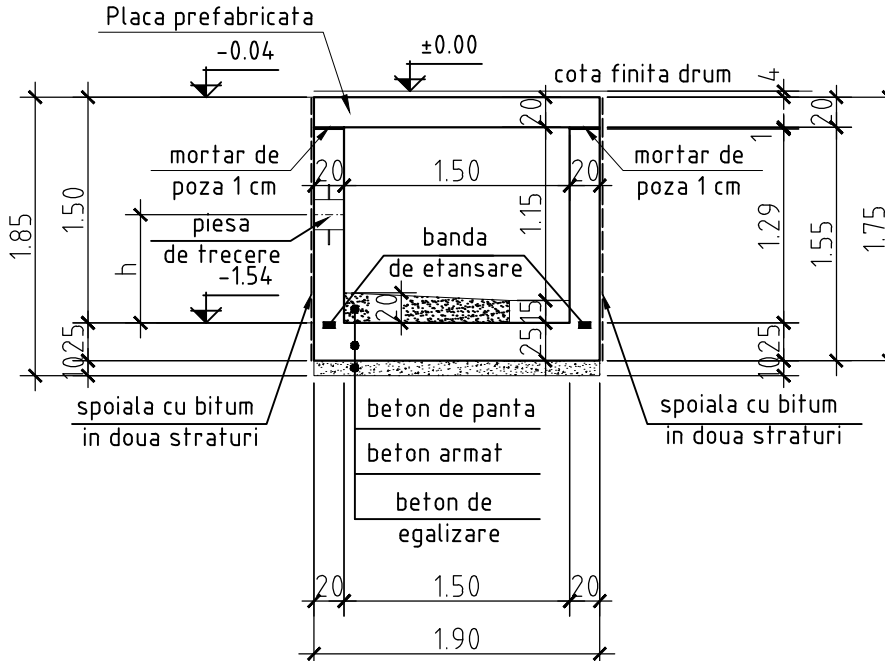


PLAN COFRAJ CAMIN TIP 3

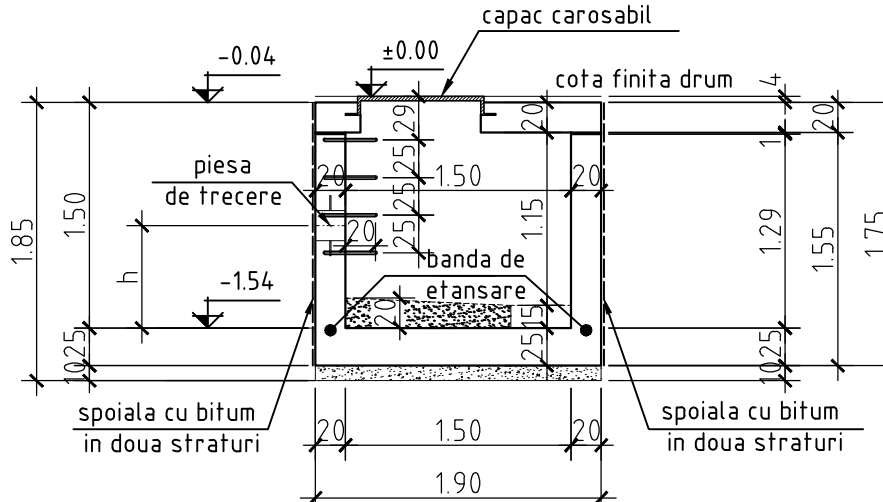
SECTIUNEA 1-

SCARA 1:50

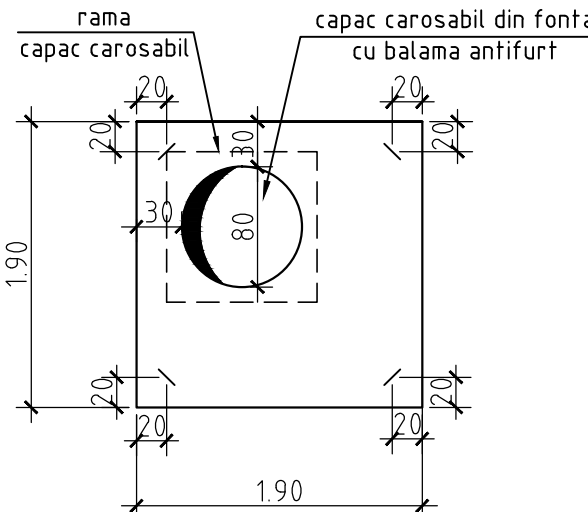


SECTIUNEA 2-2

SCARA 1:5

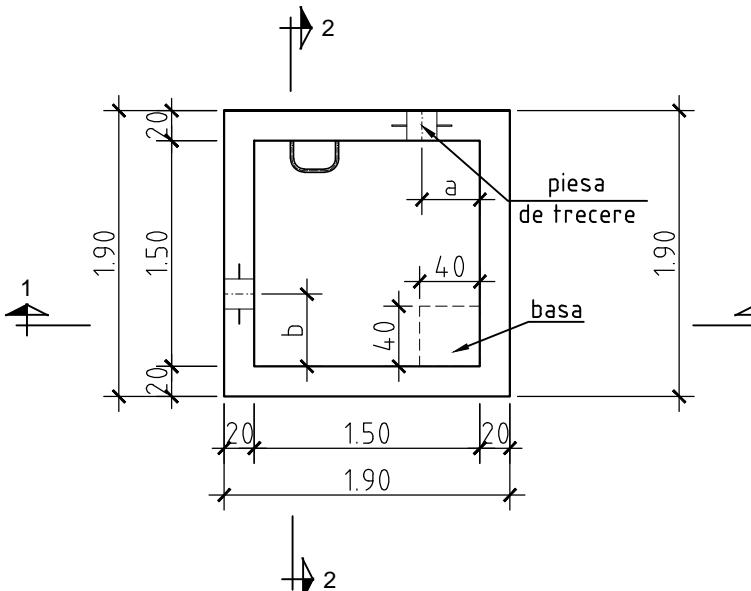


PLAN COFRAJ
PLACA PREFABRICATA



SECTIUNE ORIZONTALA

SCARA 1:5



Rev	Nume	Ver	Aprb	Data	Descriere

Autoritatea contractanta: **S.C.AQUACARAS S.A. CARAS SEVERIN**



Adresa: P-ta Republicii, nr. 7, Resita
Jud. Caras Severin
Tel.: +40 255 212 458
Fax.: +40 255 214 421
E-mail:office@aquacaras.ro


Proiectant: **Consortiu S.C Eptisa Romania
S.R.L. si Eptisa Servicios de Ingenieria S.L.**
Șos. Dudești-Pantelimon nr. 42, RAMS center, et. 5, corp A,
sector 3, București
Tel: + 40 21 301 14 70
Fax: + 40 21 301 14 80
www.eptisa.com

The logo for Eptisa, featuring the word "eptisa" in a stylized font. The "e" and "p" are blue, while the "t" is orange. The "i" and "s" are blue, and the "a" is also blue. The logo is positioned in the bottom right corner of the page.

Project: MODERNIZAREA INFRASTRUCTURII DE
APA SI APA UZATA IN JUDETUL
CARAS SEVERIN - AGLOMERAREA RESITA

Plans

Retele apa
Camin tip 3-Plan Cofraj

Desenat:	Ing. B. Paraschiv	Data: Feb. 2013
Verificat:	Ing. M. Serbanoiu	Data: Feb. 2013
Aprobat:	Ing. D. Spiridon 	Data: Feb. 2013

Plansa n

CS-RE-PT/DA-A-R-3.1

Revizia

0